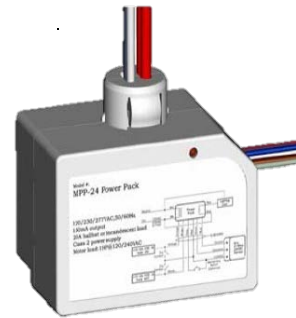


**Dc k Yf `DUW**

**Model #: A DD!&(**



**Description:**

The MPP-24 power pack is the foundation for any low voltage lighting control system. The MPP-24 supplies low voltage power to occupancy sensors and other control devices, switching line voltage in response to signals from control devices. The MPP-24 power pack is attached to existing junction boxes or mounted into fixture wiring trays. Low voltage wiring should use at least 22-gauge wire. High voltage connections should use at least 14-gauge. Always check local building codes. After initial wiring is completed, check wiring diagrams to verify the power pack is wired correctly. Improper wiring can cause damage to the power pack, lighting system, occupancy sensor and other control devices.

**Features:**

- Self-contained power supply relay system
- LED indicator of relay operation for easy verification
- Convert line voltage to low voltage in various lighting control systems
- Able to link up to six sensors at a time

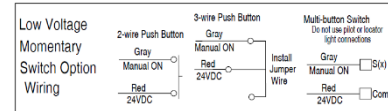
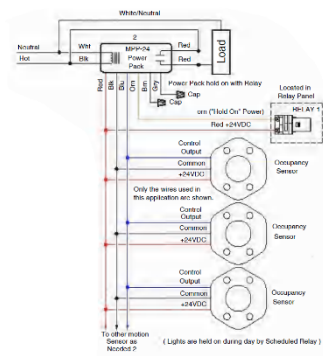
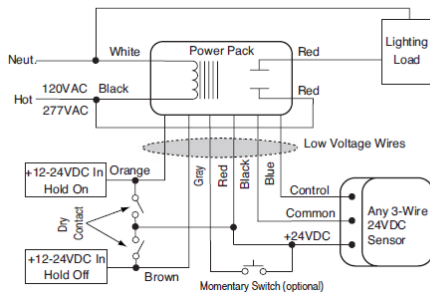
**Specifications:**

Voltage .....	120/277VA, 50/60Hz
Load Requirements:	
Ballast.....	20A @ 120/277VAC
Incandescent.....	20A @ 120VAC
Motor .....	1HP @120/240VAC
Output.....	150mA @ 24VDC (with relay connected)
Operating Temperature.....	32° to 131°F (0°to 55°C)
Low Voltage Input:	
Control ON .....	12-24VDC
Hold ON.....	12-24VDC
Hold OFF .....	12-24VDC
Manual ON (momentary switch required) .....	12-24VDC
Relative Humidity .....	20-90%, non-condensing
Material.....	ABS
Warranty.....	2 years

**Testing and Code Compliance:**

- UL Listed device

## Wiring Diagram:



## Wire Color Code:

- Black ..... Line
- White ..... Neutral
- Red ..... Load
- Blue ..... Control
- Orange ..... Hold ON
- Gray ..... Manual ON
- Brown ..... Hold OFF